

# How to Connect to the OET Remote Desktop Server on a Windows Computer

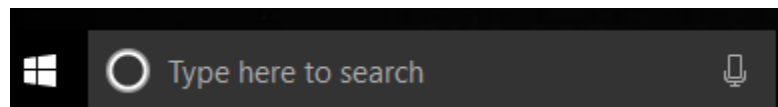
## On Campus, Windows Laptop:

If you are on campus, verify that your laptop is on the secure wireless network, **Eduroam**, or it is connected to the UD network via an Ethernet cable. Follow the steps outlined below for off-campus connections below.

## Off Campus Computers:

You will need to connect to Cisco AnyConnect VPN before connected to the server. Directions for installing and downloading the UD VPN can be found at <http://udeploy.udel.edu>. You will then need to connect via Remote Desktop Connection. Continue to follow the steps outlined below.

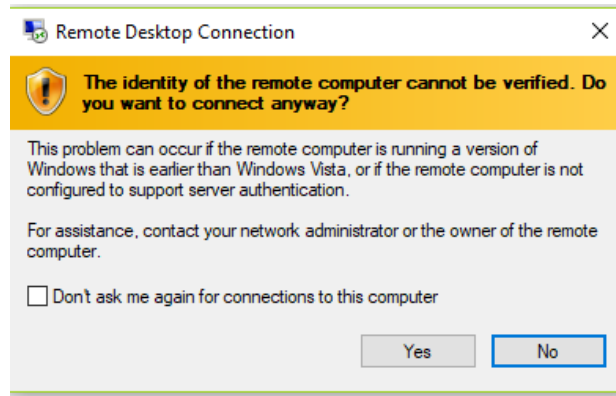
1. Go to the search box near the Windows start button. Type Remote Desktop Connection and click on it when it populates.



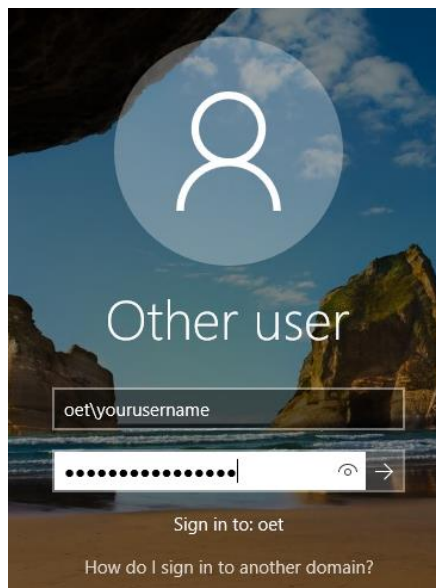
2. In the Remote Desktop Connection window that appears, type the name of the server: **remote.oet.udel.edu** in the computer field box. Click **Connect**.



3. A window will appear that states, "The identity of the remote computer cannot be verified. Do you want to connect anyway?" Click **Yes**.



4. The remote server's login screen will appear. In the "User Name" box, enter **oet\** and the username you were given by OET. In the password box, enter your OET password. Note: Upon seeing the login screen, if you are given the choice between two users, choose **other user**.



If you have questions, please contact [oet-help@udel.edu](mailto:oet-help@udel.edu), use the help request form at [www.oet.udel.edu](http://www.oet.udel.edu) or call us at 302-831-8162.